

Product Description

RCx is a simple, high density, low cost, passive connector and cable system specifically designed for intra-rack connectivity of 25 Gb, 50 Gb and 100 Gb Ethernet allowing for a seamless intra-rack switch to adapter deployments. The streamlined design eliminates the need to include provision for active electrical components such as EEPROMs, optics, retimers, or management ICs. RCx is density optimized and can accommodate more than 128/25 Gbps lanes in a RU faceplate. That leads two RCx2 receptables to fit on a half-height PCIe card faceplate or two Rcx4 to fit on a full-height PCIe card faceplate. Versatile, the 4-lane RCx4 receptacle can be used as a 4-lane port, or can be bifurcated to be used as multiple 2-lane and 1-lane ports.

| Applications | | Supported Standards |
|----------------------|-------------------------------|---------------------|
| Blade Server | Servers | 802.3 by (25GE) |
| Computing Systems | Controlled Cards | 802.3 by (100GE) |
| Networking Equipment | DAS-Direct Attached Storage | CEI-56G-PAM4-LR |
| Router/Switch | SAN-Storage Attached Networks | |
| Storage Systems | NIC cards | |

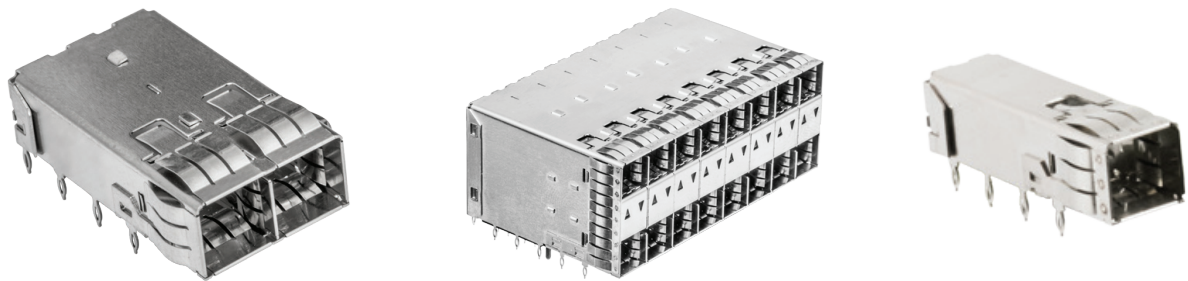
| Product Specifications - RCx | | | |
|--------------------------------------------|-----------------------------------------------------------------------------------------|-----------------------|----------------------------|
| CONNECTOR | | CAGE | |
| Materials Specifications | | | |
| Housing | Black color, Glass-reinforced, lead-free solder reflow process compatible thermoplastic | PCB Thickness | 1.57 mm (0.062 in.) |
| Contacts Base Material | Phosphor Bronze | | |
| Contact Normal Force | 50 grams | | |
| Plating Solder Tails | Matte tin over Nickel | | |
| Plating Mating Area | Gold | | |
| Operating and (Storage) Temperature | -40 °C to +85 °C | | |
| Electrical Specifications | | | |
| Operating Voltage | 30 VDC per contact | | |
| Operating Current | 0.5 A per contact | | |
| Differential impedance | 100 Ω +/- 10 Ω | | |
| Mechanical Specifications | | | |
| Mating Force | 62N maximum (RCx1, RCx2 and RCx4) | Unmating Force | 30N max (RCx1, RCx2, RCx4) |
| Durability | 250 mating cycle | | |
| Options | | | |
| Configurations | 1X1, 1x2, 1x4, 2x4, 2x8 | | |
| Environmental Specifications | | | |
| RoHS | Yes | | |
| Halogen Free | Yes | | |

Ordering Information

RCx Connector & Cage

UE12 X 1 X X 0 X X X 0 X

| | | |
|------|---------------------------------------------|-----------------------------------------------------------|
| UE12 | SERIES DESIGNATION | |
| X | STYLE | PACKAGING |
| | A - 1XN SMT Connector | 1 - Tray |
| | B - 1XN Press-Fit Cage (Spring Finger EMI) | T - Tape & Reel |
| | E - 2XN Press-Fit Combo (Spring Finger EMI) | |
| 1 | NUMBER OF PORTS IN ROW | OPTION 2 |
| | 1 - 1 to N - N in Row | 0 - Standard |
| X | NUMBER OF AUX PINS PER EACH ROW | LIGHT PIPE OPTION |
| | 0 - N/A | 0 - None |
| | 6 - Spring Finger | 1 - One Per Port (Standard) |
| X | TERMINATION | CAGE PLATING |
| | 0 - SMT | 0 - N/A |
| | 1 - All Press-Fit | 6 - Nickel-Silver Copper (Only Option for Both 1XN & 2XN) |
| | | PLATING FOR MATING CONTACT |
| | | 0 - N/A |
| | | 3 - 30 μ" (0.76 μm) Gold Mating, Matte Tin on termination |
| | | 6 - 15 μ" (0.38 μm) Gold Mating, Matte Tin on termination |



Order Information:

P: 416.291.4401 | F: 416.292.0647 | E: cages@amphenol-highspeed.com

For more information consult factory or visit amphenol-highspeed.com

Product Applications; List represents common uses for the product but is not limited to these uses.
 All specifications are subject to change without notice.
 © 2015 Amphenol High Speed Interconnects. All rights reserved.
 TechBrochure_RCx_Rev.0.01

