

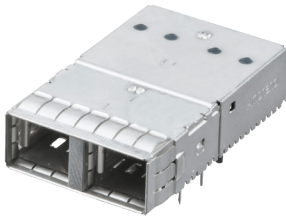
# XCede® I/O

## Product Description

The XCede® I/O interconnect system is comprised of a 32 position, variable pitch connector built for use in high speed serial applications. Each port offers 4 channels to increase port density which contributes to more board real estate and immense cost savings. The XCede® I/O connector supports next generation 100G+ applications and transmits up to 25 Gbps/serial-lane. It features a stamped and formed contact design providing improved mechanical durability and resonance dampening features for superior performance. The design minimizes crosstalk and transmission line impedance discontinuity across the connector interface.

Applications
Servers
Storage
Network Interface
Test and measurement equipment
Cellular infrastructure
Hubs and Servers

Supported Standards
Multiprotocol



Product Specifications - XCede® I/O	
<b>CONNECTOR</b>	
<b>Materials Specifications</b>	
<b>Housing</b>	Black color, Glass-reinforced, lead-free solder reflow process compatible thermoplastic
<b>Contacts Base Material</b>	Phosphor Bronze
<b>Contact Normal Force</b>	50 grams
<b>Plating Solder Tails</b>	Matte tin over Nickel
<b>Plating Mating Tails</b>	Gold
<b>Resonance Dampening Feature</b>	Conductive Polymer
<b>Operating Temperature</b>	-40°C to +85°C
<b>Electrical Specifications</b>	
<b>Maximum Voltage</b>	30 VDC per contact
<b>Maximum Current</b>	0.5 A per contact
<b>Differential impedance</b>	100 Ω +/- 10Ω
<b>Insulation Resistance</b>	1e3 MΩ min. between adjacent contacts
<b>DMV</b>	300 V AC
<b>Mechanical Specifications</b>	
<b>Mating Force</b>	55.5 N max.
<b>Durability</b>	250 mating cycles min.
<b>Latch Retention Force</b>	50 N min.
<b>Options</b>	
<b>Packaging</b>	Tape and Reel
<b>Configurations</b>	1X1, 1X2
<b>Latch Internal Plug Retention</b>	Pin-In-Hole Options Available
<b>Environmental Specifications Options</b>	
<b>RoHS</b>	Yes
<b>Halogen Free</b>	Yes
<b>Flammability Rating</b>	UL 94V-0

# Ordering Information

XCede® I/O Connector		UE86-G	X	636	0	0	X	3	T
UE86-G	<b>SERIES DESIGNATION</b>								
X	<b>NUMBER OF PORTS</b>								
	1 - 1 Port								
	2 - 2 Port								
636	<b>CAGE OPTION</b>								
	636 - Pin in Paste								
					<b>PACKAGING</b>				
					T - Tape & Reel				
					<b>OPTION 1</b>				
					3 - Standard				
					<b>OPTION 1</b>				
					2 - Ni, High Gold 50 μ" (1.27 μm)				
					3 - Ni, Standard Gold 30 μ" (0.76 μm)				
					<b>DUST COVER OPTION</b>				
					0 - Standard				
					<b>LIGHT PIPE OPTION</b>				
					0 - Standard				



**Amphenol®**  
High Speed Interconnects

**Order Information:**

P: 416.291.4401 | F: 416.292.0647 | E: cages@amphenol-highspeed.com

For more information consult factory or visit [amphenol-highspeed.com](http://amphenol-highspeed.com)

Product Applications; List represents common uses for the product but is not limited to these uses.

All specifications are subject to change without notice.

© 2015 Amphenol High Speed Interconnects. All rights reserved.

TechBrochure\_XCedeIO\_Rev.1.17

